

# NEWSLETTER

P.O. Box 129  
Confluence, PA 15424  
www.kta-hike.org



50th Anniversary, 1956-2006!

Summer 2006

## Keystone Trails Association Preserving Pennsylvania's Footpaths

### On The Trail Again: Summer Crew 2006

By Joe Healey

KTA's Summer Trail Crew earned extra high marks this year for their efforts and the record of 2,189 volunteer hours accumulated during three weeks in June.



Tom Bastian of Jersey Shore removes a stump from the Mid State Trail side trail to the village of Morris in Tioga County

The first week was spent on KTA's old faithful, the Chuck Keiper Trail in the Sproul State Forest. **Rich Scanlon** did a fine job leading the bridge cribbing crew once the permits were finally in hand (see his report on page 12). **Mary Pitzer** did her usual fine job in the kitchen. She sure knows how to feed a crew of hungry workers.

#### Mid State Trail

The second week took the crew to the Twin Streams Campground in Morris. Everyone was kept busy building the northern extension of the Mid State Trail in Tioga County. Our very capable leader, **Pete Fleszar**, had three or four crews out every day (see Pete's report on page 12). As the trail was being built, the signs were installed. Now that's the way to build a trail!! **Debra Dunkle** from Everett was looking for a challenge and she got it, cooking two meals a day under a tarp for up to twenty-nine people in a camp with hose water and electric power from generators. It doesn't get any harder than that. However, Debra passed with flying colors.

#### Woodburne Forest

The crew for the third week moved into uncharted territory, building new trail in an old growth forest preserve at the Nature Conservancy's Woodburne Forest in Susquehanna County. If anybody on this crew didn't know what a fire rake was, they do now. With me as leader for the week, the hardy group dug and raked four and a half miles of new trail and regenerated one mile of existing trail. The crew camped at a private lake in Dimmock. **Lana Adams** did a great job in the kitchen with the help of her friend **Reggie Sheffield**, who also wrote a super article about the Trail Crew for the Harrisburg Patriot News newspaper.

#### Thank You's

I want to thank several people who made these three weeks possible. First, kudos to **Ted Legenza**, a Forester in the Sproul State Forest, and to **Ray Werts**, president of the Western Clinton County Sportsmen's Club. Without their help, the first week would not have been possible. Also a big thank you to **Dale Benner** for allowing the crew to use his cabin and surrounding area as a base camp for the first week and to **John Zborovancik** for his help with a loader to fill crib baskets with rocks. Without the loader, we'd still be up there filling the baskets with rocks via muscle power. A special thanks goes out to **Judy Muth** for her help in the make-

(Continued on page 7)

#### Inside this Issue

Board of Directors	
Nominees.....	4
KTA Grant	
Information.....	4
Volunteer Hours.....	4
Executive Director	
Search.....	5
Mid State Bridge.....	5
Along Our Trails.....	6-7
KTA's Fifth Decade.....	8
Hunting Seasons.....	10
Around the Clubs.....	14

## OFFICERS

President: William Dietrich, *Indiana, PA*  
Vice-President: Carol Witzeman, *Camp Hill, PA*  
Secretary: Charles Glanville, *West Chester, PA*  
Treasurer: Thomas Kelliher, *Baltimore, MD*

## DIRECTORS

Robert Davey, Jr., *Flemington, PA*  
Norman Lacasse, *Harrisburg, PA*  
Carl Lorence, *Harrisburg, PA*  
Craig Mayer, *Warren, PA (ex-officio)*  
Thyra Sperry, *Boiling Springs, PA*  
Ronald Stanley, *Clearville, PA*  
Barbara Wiemann, *Northampton, PA (ex-officio)*

## REPRESENTATIVES-AT-LARGE

Joyce Appel, *East Brady, PA*  
Kathryn Barker, *Carlisle, PA*  
Carl Davis, *Wellsboro, PA*  
Christopher Firme, *Blue Ridge Summit, PA*  
Henry Frank, *Philadelphia, PA*  
Wayne Gross, *Cresco, PA*  
Michael Jackson, *Everett, PA*  
John Motz, *Stroudsburg, PA*  
Shethra Rigg, *King of Prussia, PA*  
Paul Shaw, *Millersburg, PA*  
Thomas Thwaites, *State College, PA*  
Barbara Van Horn, *Duncannon, PA*

## STANDING COMMITTEE CHAIRS

Conservation & Advocacy.....John Motz  
Finance.....Vacant  
Membership & Development...Charles Glanville  
Nominations.....Thyra Sperry  
Publications.....Wayne Gross  
Trail Care.....Joe Healey  
Trail Policies.....Robert Davey, Jr.

## NEWSLETTER EDITORS

Barbara & Al Wiemann  
4782 Sylvan Dr., Northampton, PA 18067  
610-262-6977  
[Bwiemann@verizon.net](mailto:Bwiemann@verizon.net)

This newsletter is published four times a year as a service to its members by Keystone Trails Association. Deadlines for submitting material are 1/1, 4/1, 7/1 and 10/1. Opinions expressed are those of the listed authors. The Editors encourage submissions reflecting all viewpoints for publication, but reserve the right to edit for reasons of space or to prevent violent confrontation. You are encouraged to submit your material on disc or via e-mail.

New members are always welcome. A membership application is located on the back page of this newsletter.

## KEYSTONE TRAILS ASSOCIATION

Pamela Metzger, Administrator  
Box 129, Confluence, PA 15424-0129  
814-395-9696— [info@kta-hike.org](mailto:info@kta-hike.org)

[www.kta-hike.org](http://www.kta-hike.org)

## 2006 Trail Care Schedule

Trail Care weekends begin Friday evening at the designated campsite. A full day of trail work on Saturday is followed by an evening of campfire sociability and possibly a meal out at a local restaurant (Dutch treat). After a morning of additional trail work, the weekend concludes about noon on Sunday. If you can't spare an entire weekend, you can join the group for whatever portion is convenient. No experience or special skills are required. Tools and work gloves will be provided.

**Contact the trip leader to register for Trail Care weekends.**

### August 18-20 - Promised Land State Park

Camp in the park campground  
Leader: Joe Healey, 570-655-4979

### September 22-24 - Chuck Keiper Trail Bridge Construction

Camping to be announced  
Leader: Rich Scanlon, 717-242-1644

### October 20-22 - Delaware State Forest

Camping to be announced  
Leader: John Motz, 570-236-1462

### November 3-5 - Quehanna Trail

Camp at cabins in Parker Dam State Park  
Leader: Ralph Seeley, 814-355-2933

Participants at the KTA-Link Trail Rock Workshop, held in May, install a set of rock steps on the Greenwood Spur trail, Rothrock State Forest, Huntingdon County. The volunteers also constructed a stone wall. John Motz was the instructor for the weekend and Rich Scanlon hosted the group at his camp.



## Future KTA Activities

### August 18-20, 2006— Absorb the Forbes Hiking Weekend

Laurel Lodge, *Laurel Mt. Village*

### October 6-8, 2006 - Fall Meeting

Camp Swatara, *Bethel, PA*

### January 6, 2007 - Board of Directors Meeting

### March 30-April 1, 2007 - Spring Meeting

Yesterday's, *Renovo, PA*

### Sept. 28-30, 2007 - Annual Meeting

Blue Knob Ski Resort, *Claysburg, PA*

We're always looking for suitable meeting sites. If you know of a facility anywhere in the state that can accommodate 150-200 folks, contact Pam Metzger (address at bottom of left column).

## MAKE A BEQUEST TO KTA

### Help Protect Our Hiking Trails

KTA has been building, maintaining, and protecting hiking trails for 50 years.

Help us build for the next generation of hikers by naming Keystone Trails Association in your will. Your bequest will reach beyond your lifetime, insuring that the trails you enjoy today will be there for the next generation of hikers.

For more information and language to use, contact KTA or your lawyer

---

# ***PRESIDENT'S MESSAGE***



Fellow Hikers,

Let's entitle this message: "Observations While at Trail Crew". For the uninitiated, Trail Crew refers to the three week long trail maintenance efforts KTA sponsors each June – Trail Care refers to the weekends. This year, I attended the one on the Chuck Keiper Trail, Clinton County, and later one in Woodbourne Forest, Susquehanna County. I have attended the past three summers.

**First** of all, Trail Crew represents the core of what KTA is about. We love hiking and trails and we dedicate large amounts of time, sweat, aching muscles, sometimes treasure, for the caring of trails.

**Second**, when I arrived at the Chuck Keiper Trail Crew campsite, I saw a bunch of friends with whom I have worked before. It was good to get updated on their lives and to reminisce about past trail maintenance efforts. I noticed that there is a core of Trail Care faithful and then a few others who volunteer for a particular effort – who we may see or not see again.

At the Woodbourne Forest Trail Crew, I was pleasantly surprised to see some old faces, some with whom I have worked on occasion and, most gratifyingly, some "newbies" including two young men (youngest was 17) and two young women who saw an ad in the paper and came out to "give back" to Pennsylvania's trails. In no time at all, they were drawn into the group of the "faithful" and soon they were old friends. I was reminded by the youth of our new friends that the core is getting very grey. I hope that new friends become regulars.

**Third**, the work done at each Trail Crew was different. At Chuck Keiper we constructed two bridge abutments and would have put in the bridges except for some problems. In Woodbourne Forest we put in a brand new trail. In each case, you would have thought that we were a bunch of professionals judging from the quality of the work. Thanks to the old-timers, new helpers soon acquire the requisite skills – especially when they ask, "What's a Pulaski?" The Nature Conservancy people at Woodbourne couldn't believe that we could put in 4 ½ miles of trail complete with blazing and cleaned up and re-blazed the 2-3 miles of trails that already existed. We were a true trail building machine.

**Fourth**, the problems at Chuck Keiper were not of our own making. Understand that construction in state forests is a highly regulated affair. A slow-motion blizzard of paperwork is required involving more than one state agency: the Bureau of Forestry must request permission to build a bridge at all, engineers must design and make sure that the design fulfills all environmental and safety standards, Fish and Boat Commission must sign off on the stream health aspects of the bridge building, DEP gets involved sometimes, even the Historical Commission must assure that no archeological sites are compromised. Many who have never hiked have a say. Those KTA volunteers who are in charge of each bridge effort are paragons of patience.

All of this happens before funding is secured and building materials are ordered. Since many bridges are far from roads, getting the building materials to the bridge site is a major problem. All of this before one Pulaski hits the ground at the abutment site. Then, almost anticlimactically, the bridge is built.

The next time you hike across a bridge keep this in mind.

**Fifth**, after the workday and after dinner, fellowship around the campfire occurs. Free-ranging discussions lead to more knowledge about our friends – new and old. This time at Woodbourne I was able to get two fellow workers to commit to helping KTA in areas other than trail maintenance. Also, one of our young friends became interested in starting an outing club at his college. While we all are interested in trails we all have other talents that we can share to help in other aspects of KTA's work.

Trail Care is why I became involved with KTA – good people doing worthy work. I recommend it to all members, young and old, regardless of skill level (there is work for all) and regardless of where in Penn's Woods you reside. Come on out. We'll sweat together and sit around the campfire together.

Keep on amblin'  
Bill

---

## Board of Directors Nominees, 2006-2009

By Thyra Sperry

The KTA Nominating Committee has selected a slate of three candidates for the three open seats for the 2006-2009 term of the Board of Directors. The election will be held at the Fall Council meeting on Oct. 7 at Camp Swatara, with elected Directors taking office immediately.

Nominees are:

**Charles Glanville**, West Chester, PA. A graduate of Wake Forest, Glanville has over 35 years experience with fund raising and nonprofit management, most recently employed in this capacity by Temple University. Charles has just completed a one-year term on the new board and served as Secretary. Charles is a past president of the Chester County Trail Club and he has served on several KTA committees.

**Steve Stroman**, Harrisburg, PA. An undergraduate of Vassar College and a graduate of Duke University, Steve is employed as Policy Director of PennFuture, Harrisburg. While working for the Pennsylvania Senate and the executive branch of state government, he had government relations responsibilities. He also worked for the Pennsylvania House of Representatives, helping to develop significant legislative initiatives. Steve's leadership helped to conserve the 670 acre 1,000 Steps in Huntingdon County. Steve was named 1999 Conservationist of the Year by the Juniata Valley Audubon Society and awarded the President's Award from the Mount Union Area Historical Society. Steve has volunteered on the several KTA committees. His hometown is Huntingdon.

**Mary Young**, Enola, Pa. Mary holds a Ph.D. in Education from Penn State. She is currently Vice President of Government Relations for the Association of Independent Colleges and Universities in Harrisburg. Prior to this position, Mary was employed in the Pennsylvania Senate, responsible for the Education Committee. Mary is a lifetime member of the Susquehanna Appalachian Trail Club and served as Vice-President. An avid hiker, Mary's hometown is Huntingdon.

The slate of officers for 2006-2007 is **President: Bill Dietrich; Vice-President: Tom Kelliher; Treasurer: Thyra Sperry; and Secretary: Charles Glanville.** Officers, who must be Directors, are elected to one year terms at the Fall Council meeting.

Nominating committee members are Thyra Sperry, Chair, Boiling Springs; Carl Davis, Wellsboro; Lorraine Healey, Laflin; David McMillan, Landisville; and Thomas Thwaites, State College.



June 2006 Board Meeting in Camp Hill.

## 2005 Volunteer Hours Top 34,000!!

by Lorraine Healey

All the volunteer trail work hours that I'm going to receive for 2005 are in, and the total is **34,241**. That figure is up 2,700 hours from last year's total of 31,540 hours. However, there are two clubs that did not submit one single hour to me.

Looking back, the figures have slowly been rising since a low figure of 25,300 in 2002. So that's good news. It would be great to surpass the all time high figure of 42,000+ hours from 2001. If every club and all individual maintainers not affiliated with a club turn in their hours next year, maybe there will be that possibility.

**Thank you, volunteers, for all your hard work!** Hikers in Pennsylvania are fortunate to have you keeping the state's foot trails maintained for them to enjoy.

## KTA to Submit Grant Application Clubs Could Use Funds to Meet Maintenance, Training Needs

By Bill Dietrich

At its February meeting, the KTA Board of Directors committed to writing a grant proposal for trail maintenance by its members clubs. Directors Norman Lacasse and Carl Lorence volunteered to "head up" this project.

The grant we are proposing is unique for us. We are asking each club to make a proposal to KTA. Then KTA will write a master proposal to DCNR combining all of the sub-grant proposals from the member clubs. In this way the clubs are relieved of the arduous work of submitting a proposal to DCNR. Further, DCNR doesn't have to read a large number of proposals for small (relatively speaking) sums.

At this time, all of the club presidents have received both hard and electronic copies of the application forms for sub-grants devised by Carl and Norm. Each club is asked to submit grant applications for equipment and supplies to accomplish specific trail maintenance outcomes. A second application is available for club members to be trained in trail care techniques, tool safety, etc. Each club may submit one or more sub-grant applications.

Clubs maintain trails on lands owned by several types of owners: federal, state, county, municipal and private. KTA is a **public service** organization which provides/maintains trails for the hiking public. Thus, there shall be no discrimination with regard to work on trails on lands of any ownership as long as there is proof that the trail is open to the public at large. In most cases, it is obvious that the trail in question is open to the public. In other, less obvious cases, this may require a letter or other document stating that the trail is open to the public.

Each of our member clubs is asked to seriously consider what its maintenance goals are for the next couple of years and to participate in this program. Please be assured that, should our grant application be denied, we will resubmit it in the next grant cycle.

By providing this new avenue to needed equipment, supplies and training for member clubs, KTA is exercising its responsibility to carry out the trail care mission.

For more information contact KTA Administrator Pam Metzger at [ktaadmin@kta-hike.org](mailto:ktaadmin@kta-hike.org)

## KTA Seeks Volunteer Executive Director

By Thyra Sperry

KTA is seeking applications from retired executives of non-profit agencies residing in the greater Harrisburg area to fill its newly created volunteer position of Executive Director.

The Executive Director will:

- Report to the President, serve *ex officio* on the board of directors, and work with committee chairs in coordinating the fund-raising, fiscal operations, publications, membership, land-preservation and outreach activities of the Association, with primary emphasis on pursuing grants and monitoring relevant legislation.
- Act as a liaison in promoting broad partnerships with appropriate legislative, government, and environmental agencies and, along with the President, serve as spokesperson for the Pennsylvania hiking community
- Cultivate and strengthen the volunteer base, and supervise a part-time administrative assistant and a few volunteers
- Set up and maintain an office in the Harrisburg area

The successful candidate will be a retired, energetic, capable executive with non-profit agency experience who loves the outdoors, enjoys working with volunteers, and desires an active, and challenging position with an established nonprofit statewide organization whose mission is to develop, maintain, protect, and

conserve Pennsylvania's hiking trails and encourage increased hiking opportunities for the general public.

The desired qualifications include:

- BA/BS degree (a Master's is a plus). Prefer a degree in environmental science, conservation, resource management or related area. Minimum of five years of management experience including staff, fiscal and project supervision
- Experience working with volunteers
- Success in membership development or grant writing/fund-raising
- Demonstrated skills in communication
- Word processing and Internet skills
- Car needed for travel

Since the position is voluntary, no salary is provided, but the Association does offer a car allowance and an expense account.

Please submit a cover letter and resume (no more than two pages) to [hikesperry@aol.com](mailto:hikesperry@aol.com). For attachments, use plain text format and use your name as the name of the attachment. Or send by mail to: Thyra Sperry, Chair, Executive Director Search Committee, Keystone Trails Association, 740 Oak Hill Drive, Boiling Springs, PA 17007-9426.

## MSTA Awarded DCNR Grant for Bridge In Bedford County

The Mid State Trail Association has been awarded a \$51,400 grant by the Department of Conservation and Natural Resources to help cover the cost of removing an unsafe bridge over Yellow Creek in South Woodbury Township in Bedford County and purchasing and installing a new bridge. The cost of the new bridge is \$70,900, requiring a match of \$19,500 by MSTA.

The new bridge will be an 80-foot fiberglass span from E. T. Techtonics in Philadelphia. The bridge components will be fabricated in Bedford and are light and durable. MSTA volunteers will build the bridge once the components are delivered to the site. Images of this type of bridge are available at [www.ettechtonics.com/Park\\_Trail.htm#ParkBridges](http://www.ettechtonics.com/Park_Trail.htm#ParkBridges). Installation date depends upon raising the match funds and the release of the grant funds.

Tom Kelliher, MSTA President, stated, "Given the already high use of this bridge by hikers, hunters, fishermen, nature-lovers, church groups, youth groups, and others, and the even higher use it will receive as the Great Eastern Trail attracts hikers, this is a much needed safety improvement in the Mid State Trail's Everett Region. **John Stein** had the foresight to see the need for this bridge and **Ron Stanley** had the drive to put together a strong grant application. We are quite grateful to Lauth for recognizing the worth of this project through their generous donation of \$5,000. We still have quite a ways to go to providing our match, so we're quite happy to accept any donations, monetary or otherwise, that KTA members may want to make toward this project."

### Donation from Lauth Property Group

To mark the groundbreaking of a new Recreational Equipment,

Inc., distribution center in Bedford County, construction contractor Lauth Property Group of Indianapolis, IN, made a contribution of \$15,000 to the Mid State Trail Association. MSTA will commit \$5,000 toward construction of the new footbridge over Yellow Creek and \$10,000 to finance improvements to Tenley Park in



**Tom Kelliher, MSTA President (third from left) accepts a check from Michael Jones, Lauth Vice President (fourth from left). Looking on are Brian Unmacht, REI Vice President for Sales, Service, & Store Development; Ron Stanley, MSTA; John Stein, MSTA; Debra Dunkle, MSTA; and Gwen Douglas, Borough of Everett.**  
Photo by Michael Jackson.

Everett.

Donations may be sent to MSTA, PO Box 167, Boalsburg, PA

## Along Our Trails

### Appalachian Trail

#### New Darlington Shelter



The Mountain Club of Maryland replaced the old Darlington Shelter, located north of the Cumberland Valley, with this new structure. MCM also constructed a new composting privy to replace a pit privy on the site. Photo by Bob Sickley.

#### PA 944 Bridge

The Mid Atlantic Regional Office has received official notification from the Harrisburg Area Transportation Study that the Appalachian Trail Conservancy's \$1,148,250 proposal for construction of a safe AT crossing of PA 944 in Cumberland County at the north end of the Cumberland Valley has been approved through PennDOT's Transportation Enhancement program. This crossing was rated the most dangerous AT road crossing in the state. This will be the third TE project that PennDOT has funded on the AT. The Bernheisel Bridge walkway and the PA 225 bridge in Dauphin County were the others. Regional director Karen Lutz notes that the competition for these funds was particularly keen and "we owe a great deal of gratitude to our stalwart PennDOT partners and advocates, **Kris Feldmeyer** and **Dan Acurti**."

#### Wind Gap Parking Lot

MARO has also learned that a \$15,000 proposal to upgrade the trailhead parking facility at Wind Gap was approved by a private foundation that asks to remain anonymous. The foundation approached ATC and invited ATC to submit a proposal for a project in that particular area.

### Baker Trail

The **Rachel Carson Trails Conservancy** and the **Clarion Chapter of the North Country Trail** are nearing the end of their quest to relocate a section of trail from private land onto Game Land 283. After surveying and flagging the route and walking it with the Land Manager, they learned of a possible conflict with wildlife habitat. This brought in the PA Fish and Boat Commission, which required a field survey. In June the Commission reported that the species did not appear to have habitats in the area and the trail can proceed as planned. Final approval is expected shortly. For more information contact Patty Brunner, Baker Trail Coordinator, [PaBrunner2@cs.com](mailto:PaBrunner2@cs.com).

### Mason-Dixon Trail

The land now occupied by the Newark Country Club has been sold to a developer. However, the developer will provide a route for the M-DT through the area.

### North County Trail

#### NCTA Organization Changes

After evaluating organizational priorities, the NCTA Board has directed staff to concentrate on improving existing trail segments and adding new trail toward the eventual goal of a completed end-to-end footpath. To implement this directive, NCTA has launched three major efforts and postponed hiring an executive director.

NCTA is moving toward regional trail management and hiring Regional Trail Coordinators. Three are now in place, including **Andrew Bashaw** for the Pennsylvania-Ohio region. Bashaw can be reached at [AndrewBashaw@northcountrytrail.org](mailto:AndrewBashaw@northcountrytrail.org). **Ron Rice**, [rice1@nauticom.net](mailto:rice1@nauticom.net), is the volunteer state trail coordinator.

To better maintain existing trail, NCTA is working to secure funding for seasonal trail crews and establishing a trail maintenance program with one chapter. This pilot project will serve as a model for the rest of the chapters.

Finally, NCTA is upgrading its GIS trail database to keep track of work needed and progress. The inventory data will also be used by the National Park Service and satisfy federal requirements. Overall, almost 2,100 miles of off-road trail (out of approximately 4,600 miles) is completed.

#### New Shelter and Bridge at Hunter's Station

A new bridge and shelter at Hunter's Station in the Allegheny National Forest were dedicated on July 7. The 40-foot bridge, constructed of treated Virginia pine, is 40 inches wide. The Adirondack style shelter is hemlock to deter munching by porcupines. A tent platform, bench, open space for tenting, and four nearby springs complete the complex. Hunter's Station is 4.6 miles east of Minister Rd. and 5.8 miles from PA 66 at Henry's Mills. Future shelters are planned at Queen's Creek and Cherry Run.



Hunter's Station Bridge, with shelter in distance. Photo courtesy of Andrew Bashaw.

#### Current PA Projects

In Pennsylvania, 170 miles of off-road trail have been blazed. About 95 miles need to be constructed, and six chapters are working to close the gaps. The Wampum Chapter is building six new miles of trail on CEMEX property near Wampum, PA. A nine member Student Conservation Association crew, hosted by the North Country Trail Association and Moraine and McConnell's Mill State Parks, is improving a difficult 6.2 mile segment of the Slippery Rock Gorge Trail in McConnell's Mill State Park. Work began in July and continues thru August 25.

(Continued from page 1)

shift kitchen at Twin Springs Campground and to **the Ely and Adams families** who are involved with the Nature Conservancy. Without their perseverance, the Woodbourne Forest project would not have become a reality. Lastly, thanks to all the volunteers who worked tirelessly to build and improve these hiking trails for everyone to use and enjoy.

**Early risers check the blueberry pancakes that will be served for Trail Crew breakfast.**



## Conservation and Advocacy Committee

By John Motz

The new KTA Conservation and Advocacy Committee is currently seeking input from our member organizations regarding KTA's role throughout the state in helping to protect footpaths and getting the word out about KTA's efforts.. We are also seeking contacts from each member organization for the purposes of disseminating information. We envision communicating through electronic means with the member organizations having those capabilities. Emails will go out to each Club for whom we have contact information. Please be sure that KTA has current contact information on your Club by emailing it to [info@kta-hike.org](mailto:info@kta-hike.org). If you have an interest in conservation or ideas on how KTA can promote hiking in Pennsylvania, please contact Committee Chair John Motz at [jmotz@enter.net](mailto:jmotz@enter.net) or 570-236-1462.

## Great Eastern Trail

By Tom Kelliher

On Saturday, May 27, representatives of the Mid Atlantic Foot Trails Coalition (MAFTC) and the Southeastern Foot Trails Coalition (SEFTC) met in Blacksburg, VA, to discuss the Great Eastern Trail (GET) and a memorandum of understanding (MOU) for coordinating GET efforts between the two coalitions and their member clubs. The GET, a long distance hiking trail that will run from Alabama to New York, was publicly announced in the spring 2006 edition of the *American Hiker*, the American Hiking Society's quarterly magazine. Within Pennsylvania, the GET will make use of the Mid State, Link, and Tuscarora trails. GET information is available at [www.greateastertrail.org](http://www.greateastertrail.org).

### MAFTC

The MAFTC was formed in November, 2005, specifically to work on the GET. The members of the coalition are the Potomac Appalachian Trail Club, the Link Trail Club, the Mid State Trail Association, and the Finger Lakes Trail Conference. KTA has an observer within the coalition. The MAFTC has support from the Green Ridge State Forest in Maryland.

### SEFTC

The primary goal of the SEFTC is to increase the availability of hiking trails within the southeast. The GET, while important, is not a primary focus to all of the SEFTC member clubs. SEFTC members include the Cumberland Trail Conference, the Alabama Trails Association, the Georgia Pinhoti Trail Association, and the Pine Mountain Trail Conference.

The MOU was crafted to foster a spirit of cooperation between the two coalitions and allow for maximum flexibility, given their different priorities. The local regulations and policies currently in force for each trail along the GET will continue to hold force. Public and private partners of the member clubs will continue to work with the member clubs, and not the

MAFTC or the GET Coordinating Committee.

The MOU defines the GET Coordinating Committee as including one primary and one alternate member from each state through which the GET passes. In Pennsylvania, **Tom Kelliher** will be the primary member and **Carl Lorence** the alternate.



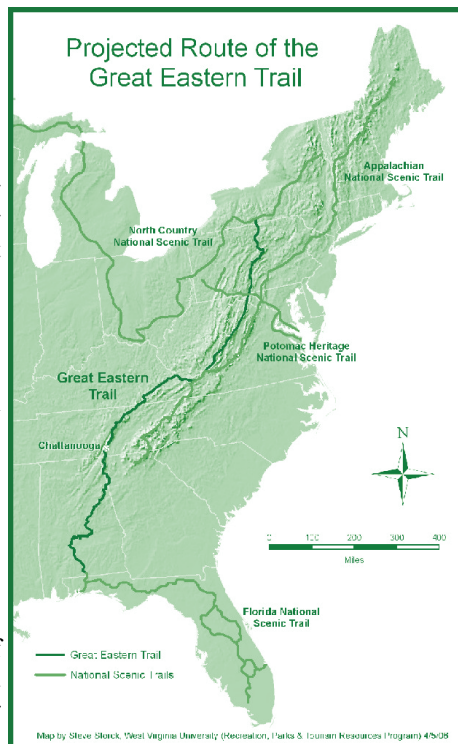
**Tom Thwaites displays his new GET sign..**

There will be two co-chairs, one from each coalition. The co-chairs are **Bob Williams**, Alabama Trails Association, and **Tom Johnson**, PATC.

### MD/PA Loop Trail

**Ron Stanley**, MSTA, and **Francis Zumbun**, Green Ridge State Forest, made presentations in support of a proposal to include a loop within the GET in Maryland and southern Pennsylvania. The loop includes the C and O Towpath Trail, the Green Ridge Hiking Trail, the Mid State Trail, the Link Trail, and the Tuscarora Trail. This proposal was later accepted. Both the eastern and western legs of the loop will be considered to be the main route of the GET. Backpackers looking for a loop route will be able to find it on the GET and will have access to the amenities at the proclaimed trail town of Everett.

Several years ago, when the MSTA undertook the task of extending the Mid State Trail to the New York state line and connecting to the Finger Lakes Trail, we did so with the thought that later something like the GET would come along. Little did we realize it would come along so quickly.



**Map of the Great Eastern Trail from the GET web site. The MD/PA loop is not shown..**

# KTA's Fifth Decade, 1996 – 2005: Maturity and Change

By Hugh Downing

The last ten years of KTA's first half-century saw the organization begin to establish itself more firmly as *the* statewide organization representing the hiking community. Broadening concerns forced the organization to look beyond its early roots as a group of clubs focused mainly on the Appalachian Trail.

A perusal of *KTA Newsletters* from the period reveals that much was going on and that some things never change.

## 1996

As the period begins, it is noted that reported volunteer trail-work hours have passed 25,000 and that the Link Trail is nearing completion. Unfortunately, achieving the last few remaining miles of the Link became a challenging quest. Fickle and fluctuating landowners frustrated efforts to finalize the best route.

## 1997



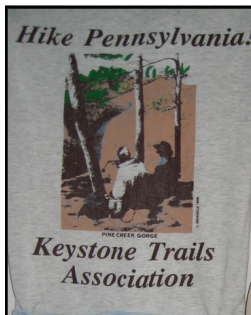
The first Summer Trail Crew (then called "Extended Trail Care") is formed to tackle trails needing more attention than could be provided by weekend crews. The first crews spend 5 days each on the Donut Hole, Oil Creek and Mid State trails with great success. The Summer Trail Crew

program has continued and grown each year since. The first year was funded by grants from Eastern Mountain Sports and other sources.

The first of a set of new 4-color maps for the AT in Pennsylvania is released to great acclaim. The map covers the area from the Susquehanna River to Swatara Gap. The map, and another one to follow, replace the old, and much-maligned, black and white ones.

PennDOT is looking into a way to make the AT road crossing at PA 225 atop Peters Mountain safer.

A new KTA T-shirt is offered featuring a picture of hikers at Pine Creek Gorge, and the first article concerning the 1,000 Steps on the Link Trail appears in the *Newsletter*. The campaign to "Save Our Steps (SOS)" is kicked off in the Fall. KTA pledges to help raise \$90,000 needed to buy the property on Jack's Mountain near Mt. Union. Members are urged to "Buy A Step". Volunteer hours reach 33,000.

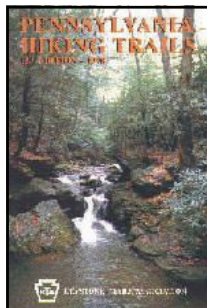


## 1998

At the beginning of the year, 27.3% of the SOS goal has been raised. By year's end that rose to 84.3%.

Growing concern arises regarding the use (or mis-use) of hiking trails by bikers and equestrians. A September meeting in Harrisburg, convened by DCNR, results in a sometimes-contentious confrontation between hikers and those who want to use fragile hiking trails for their not-so-fragile activities.

The 10<sup>th</sup> Edition of the *PA AT Guide* is released as is the second of the full-color maps. This map covers the sections from the Delaware



River to Swatara Gap. The 12<sup>th</sup> Edition of *Pennsylvania Hiking Trails* is also released.

The American Hiking Society (AHS) awards a \$4,000 grant to KTA to fund the 2<sup>nd</sup> year of the Summer Trail Crew; volunteer hours slip to 32,000.

## 1999

Discussions continue regarding conflicts between hikers and bikers/equestrians. KTA drafts a petition for KTA members to send to DCNR Secretary John Oliver urging "positive posting" of all State Forest Hiking Trails which would designate them as foot-paths only. In the Fall, DCNR and the Bureau of Forestry (BOF) announce that all 18 of the State Forest Hiking Trails and the 3 National Scenic Trails will remain "Hiker Only". Despite the sometimes well-funded efforts of the horse and biker interests, the hiking community prevailed.

Another victory for hikers is celebrated with the successful completion of the SOS campaign as the 1,000 Steps property is decided over to the Central Pennsylvania Conservancy for eventual ownership by the Pennsylvania Game Commission.

DCNR names KTA as "Conservation Volunteer Group of the Year" in recognition of many years of work on hiking trails in the Sprout State Forest.

AHS awards KTA another \$2,000 grant for the Summer Trail Crew program and Joe Healey takes over as co-coordinator.

A map and guide to the Bucktail Path, written by Jim & Ginny Owen, is released; the Mid State Trail celebrated their 30<sup>th</sup> anniversary, and volunteer hours grew to 35,500.



## 2000

The ATV issue explodes into our consciousness as the Sierra Club warns of the possibility of DCNR allowing the expansion of ATV trails in State Forests. KTA immediately mounts a campaign to oppose any such moves and urges greater enforcement of existing rules.

The Allegheny Front Trail, conceived in 1995 as the Lost Mountain Trail, is dedicated on May 20<sup>th</sup>. Ralph Seeley spear-headed planning and building of the 40+-mile trail in the Moshannon State Forest.

250 people attend the Spring Meeting in Wellsboro and Council votes to raise individual dues from \$9 to \$15.

Legislation to authorize Sunday Hunting is introduced in the PA Legislature, but fails to get anywhere. The issue will continue to re-appear on a regular basis. Hikers oppose the proposals.

Plans are announced to publish a *Pennsylvania Hiking Trails* calendar for 2002. Wayne Gross will lead the effort. A beautiful calendar is eventually produced, to great acclaim, but prohibitive costs prevent continuing with the project.

Mildred Forrester announces plans to retire as KTA Administrator and Treasurer. Panic and anguish overwhelm the KTA President. Volunteer hours reach 42,305.

## 2001

The AT biennial conference is held at Shippensburg University, July 13-20. Thyra Sperry chairs the event with many KTA clubs and members involved in planning and support.



The DCNR Advisory Council convenes a meeting of 60+ representatives from recreational interests and government agencies to discuss ATV issues. Some broad conclusions are reached, but not much else. The Legislature passes House Bill 154 (Act 68) which significantly improves the regulation of ATVs in the state. One of the bill's provisions establishes an ATV/Snowmobile Advisory Committee in DCNR. John Motz is named as KTA's first representative. The PA Game Commission, also feeling pressure from non-hunting recreationists, including ATVs, establishes an ad-hoc committee to deal with unregulated and harmful uses of state Game Lands. John Stein represents KTA on that committee.

In an effort to enhance KTA's relationship with the BOF, KTA proposes the establishment of a Letter of Mutual Understanding between the two groups. It takes until 2004, but the agreement is finally finalized between KTA, BOF and the trail clubs that maintain trails on BOF lands.

Plans are announced for the first-ever PA Hiking Week to be held May 11-19, 2002 in cooperation with DCNR; the KTA Multi-Use committee drafts and prints a brochure outlining trail etiquette practices for hikers, cyclists and equestrians using multi-use trails; the Mid State Trail will explore the idea of extending their trail to the New York border to connect with the Finger Lakes Trails system, and volunteer hours drop to 34,700.



### 2002

The concept of "Endangered Trails" emerges as a means of directing attention toward, and encouraging action for, those trails whose integrity are threatened by any number of pressures.

Pam Metzger is named as the new KTA Administrator and the KTA mailing address moves to Confluence, PA.

Pennsylvania Hiking Week kicks off with Gov. Schweiker and DCNR Secretary Oliver participating in two of the more than 100 scheduled hikes.

Tom Thwaites retires as Trail Chair after many years, he will be succeeded by Joe Healey; the Link Trail Hiking Club is formed and volunteer hours rise to their highest level ever – 42,677.

### 2003

KTA is awarded a \$13,800 grant from DCNR for the purchase of new trail care equipment and a new trailer to haul it. Actual release of the money is delayed for nearly a year while waiting for the Feds to free it up.

An initiative to revamp KTA's mission and structure is presented to Council at the Fall meeting

by members of the Endangered Hiking Trails (EHT) committee. This results in the establishment of a number of committees to study and implement the various aspects of the proposal.

### 2004

The various committees dealing with the EHT proposal conclude their work and make their reports to Council. A new set of Bylaws is drawn up after many drafts and is approved by Council

at a summer meeting and by the full membership at the Fall meeting. The new Bylaws provide for, among other things, a Board of Directors to manage the affairs of the organization. A committee begins the search for nominees to the Board.

The new AT bridge of Rte. 225 on Peters Mtn. is dedicated on November 8<sup>th</sup>. The bridge eliminates a very dangerous road crossing.

The new Trail Care trailer makes its first appearance at the Fall meeting. Everyone is impressed!

First mention is made of a new problem (and acronym) for trail builders and maintainers: the Highway Occupancy Agreement (HOA). PennDOT decides that such an agreement, accompanied by cumbersome paperwork and documentation, well beyond the capabilities of the average volunteer trail club, needs to be undertaken for every instance where a hiking trail crosses a state highway. The implications for trails and clubs are frightening. With a lot of help from Rick Carlson at DCNR and the tireless efforts of Tom Kelliher, an agreement with PennDOT for a simplified and much more manageable procedure is devised.

The first "Prowl the Sproul" weekend is planned in cooperation with the Sproul State Forest and the Western Clinton Sportsmen's Association and is a great success. It's well on its way to becoming an annual event.

A mail appeal nets more than \$10,000 for Trail Care...oh, yes, volunteer hours for 2004 came to 31,500.

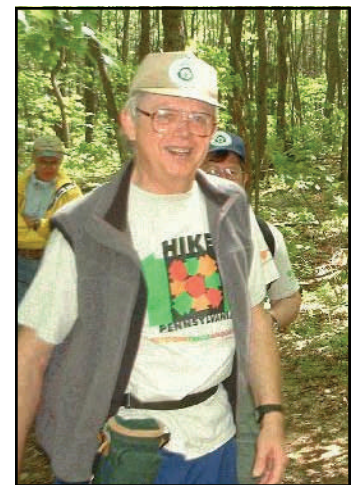
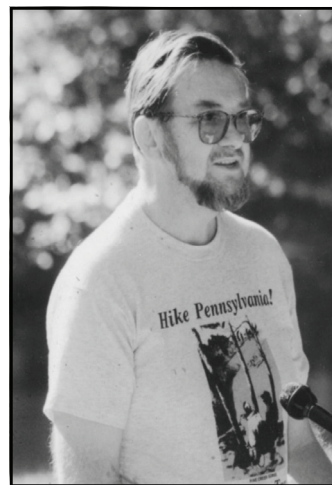
### 2005

2005 is a quiet year as the Association prepares for the transition to the new Board-of-Directors form of management. Work progresses on the 13<sup>th</sup> edition of *Pennsylvania Hiking Trails, a Guide to the Link Trail* and a new edition of the AT Guide.

In June, KTA presents testimony before the Game & Fisheries Committee of the PA House of Representatives setting forth our opposition to legislation that would enable the Game Commission to permit Sunday hunting.

In October, the new Board of Directors and a new set of officers takes over. Their first priority is to initiate a strategic planning process that would allow them to set goals and priorities.

Council turns management responsibility for the Link Trail over to the Link Trail Hiking Club, thereby relieving the Association of responsibility for any specific trails and allowing it to be



**Presidents during KTA's 5th decade: Ed Beck (1994-1999) and Hugh Downing (2000-2005), sporting official KTA attire.**

## State Parks & Forests News

### New State Parks Director

John W. Norbeck, a 29 year veteran of Maryland's State Forest and Park Service, has been appointed director of Pennsylvania's Bureau of State Parks. He succeeds Roger Fickes, who retired in June after directing Pennsylvania's park system since 1992.

### State Forests "Well Managed"

For the eighth consecutive year, an outside team of scientists has lauded Pennsylvania's state forests as being "well managed" to ensure their future health, protect habitats, and support a timber industry. The review was conducted by Scientific Certification Systems, which is accredited by the Forest Stewardship Council.

The report applauded the Bureau's habitat management, including efforts to retain trees used by animals for dens, promote understory diversity, and protect vernal ponds and other water sources. However, the report also cautioned that forest regeneration was impacted by deer, and that situation needs to be addressed. It was noted that a browse line exists across most of the state and ecosystem functions have eroded.

### New Statewide Program Urges Pennsylvanians to Get Active Using Local Parks and Trails

Keystone Active Zones debuted June 3 on National Trails Day, to encourage Pennsylvania residents to discover the parks and trails in their own back yards as great places for physical activity. Pennsylvania Advocates for Nutrition and Activity (PANA), a statewide coalition, has teamed up with the Department of Conservation and Natural Resources (DCNR) to launch the new campaign, which shows countywide coalitions how to promote and market their parks and trails. The Pennsylvania Department of Health and the Pennsylvania Recreation and Park Society (PRPS) also are partners on the KAZ program.

The campaign is designed to provide an opportunity to develop community partnerships between recreation, education, health advocates and other non-profit partners, and increase use of local parks and trails. Keystone Active Zones features a web-based directory to help residents find information about activities at nearby parks and trails, county brochures and a passport incentive program to encourage their use, especially by school students.

The KAZ program allows users to go to a website [www.keystoneactivezone.com](http://www.keystoneactivezone.com), select their county and search for local parks and trails by activities and amenities. Information will include directions, hours of operation and local contact information. Information is currently listed for a number of counties, while others are under development. All counties throughout Pennsylvania are being encouraged to implement the program.

Established by the Pennsylvania Department of Health, PANA is a statewide coalition of more than 500 public, private, academic, professional and volunteer groups working to promote policies and environments that support healthy eating and activity.



## 2006-2007 Hunting Seasons

**COYOTES:** No closed season

**OPOSSUM, SKUNKS & WEASELS:** No closed season, except for prior to noon during the spring gobbler season

**STARLINGS AND ENGLISH SPARROWS:** No closed season, except during the antlered and antlerless deer seasons and until noon daily during the spring gobbler turkey season

**WOODCHUCKS:** No closed season, except: Sundays, during the antlered and antlerless deer seasons, and until noon daily during the spring gobbler turkey season

**CROWS:** July 1-Nov. 25 and Dec. 29-April 1 on Friday, Saturday and Sunday only

**ELK:** Sep. 17-22, Nov. 6-11

**DEER, ARCHERY:** Sept. 30-Nov. 11, Dec. 26-Jan. 13

**PHEASANT:** Oct. 7-13, Oct. 21-Nov. 25, Dec. 11-23, Dec. 26, Feb. 3.

**SQUIRRELS:** Oct. 7-Nov. 25, Dec. 11-23, Dec. 26-Feb. 3

**DEER:** Oct. 14-21, Nov. 27-Dec. 9, Dec. 11-23, Dec. 26-Jan. 13

**RUFFED GROUSE:** Oct. 14-Nov. 25, Dec. 11-23 and Dec. 26-Jan. 27

**BOBWHITE QUAIL:** Oct. 21-Nov. 25

**RABBIT:** Oct. 21-Nov. 25, Dec. 11-23 and Dec. 26-Feb. 3

**RACCOON, FOXES, BOBCAT:** Oct. 21-Feb. 17

**WILD TURKEY:** Oct. 28-Nov. 18

**BLACK BEAR:** Nov. 15-16, Nov. 20-22, Nov. 27-Dec. 2

**HARES:** Dec. 26-Jan. 1

**SPRING GOBBLER:** April 21, April 28-May 26

NOTE: All dates are not valid in all management units and for all classes of hunters. Check the Game Commission website [www.pgc.state.pa.us](http://www.pgc.state.pa.us) for details.

*Be Safe!! Wear blaze orange!!*

## Game Commission News

### New Game Land 93 in Somerset County

The Game Commission will acquire about 300 acres of new State Game Lands located immediately north of the Flight 93 National Memorial in Somerset County. The purchase of this and other area properties is part of an ongoing cooperative effort involving the Game Commission, The Conservation Fund and the National Park Service, including its partners the Flight 93 Advisory Committee, Flight 93 Memorial Task Force and the Families of Flight 93 Inc.

Four years ago, Congress passed the Flight 93 Memorial Act, which called for the creation of a new National Park Service unit to honor the courageous members of Flight 93 who thwarted a terrorist threat to attack Washington, D.C. with a hijacked commercial aircraft.

The new State Game Lands created by this land acquisition will be designated SGL 93 in honor of Flight 93's passengers and crew. The current SGL 93, a 4,876-acre holding located in Clearfield County, will be renamed SGL 331.



## PA Highlands News

### AMC Mid-Atlantic Office Moves to PA Highlands

The Appalachian Mountain Club's Mid Atlantic Office has moved to Bethlehem. This places the office in the Pennsylvania Highlands, a region in which AMC has focused conservation efforts for the past several years. The new address is 520 Long Street, Bethlehem, PA 18018, 610-868-6903. AMC shares this space with the Highlands Coalition.

In addition to Project Manager Kristen Sykes, the AMC office is staffed with a GIS specialist and a recreational planner. The recreational planner will work on creation of a Highlands Trail, trail stewardship on the AT and other trails that AMC maintains, and conduct outreach to AMC Chapters and the public at large.

### Highland Protection Efforts

AMC has completed a PA Highlands Greenway Map, showing key lands already protected and identifying land in need of protection. In partnership with the Trust for Public Land, the Highlands Coalition, and Stell Environmental Enterprises, AMC has developed a Conservation Atlas that highlights natural areas in danger of being developed. To order a copy, contact Sykes

Last year, AMC joined in a study the US Forest Service had undertaken of the PA Highlands. With the help of many AMC members and other stakeholders, the U.S. Forest Service has drafted a map of the places that have "high conservation value." The map is available at on the AMC web site.



Map courtesy of AMC & Outdoors.org

AMC is working to obtain funding to protect critical Highlands acreage. Foremost on the list are two areas in Berks County - the 2,000-acre Oley Hills and Birdsboro Waters (see below).

For more information, see [www.outdoors.org/conservation/wherewework/highlands/index.cfm](http://www.outdoors.org/conservation/wherewework/highlands/index.cfm).

### Birdsboro Waters Protection

The Natural Lands Trust has received several grants to purchase conservations easements on the 1,800 acre Birdsboro Waters property in Berks County. The state's Growing Greener II fund contributed \$750,00 and the federal Forest Legacy program and the William Penn Foundation added \$500,000.

Birdsboro Waters is a major part of the largest unprotected woodland in southeastern Pennsylvania. Totalling more than 73,000 acres, the Hopewell Big Woods landscape covers large portions of northern Chester and southern Berks counties, and includes French Creek State Park and other protected open spaces. The east end of the Birdsboro Waters property links with French Creek State Park. The planned Hay Creek Trail along former PA 82 would join this area to the French Creek and Thun trails.

## DCNR Unveils New Recreation Plan For the Pennsylvania Wilds

DCNR has unveiled its new recreation plan for the 12-county region in north central Pennsylvania known as the Pennsylvania Wilds.

The goal of the Pennsylvania Wilds initiative is to increase outdoor recreation and heritage tourism across north central Pennsylvania consistent with responsible stewardship of the region's public lands. The overall objective of the 108-page plan, prepared by contractor Fermata, Inc., is to improve access to recreation opportunities while maintaining DCNR's stewardship responsibilities.

The plan recommends establishing state park and forest model and signature recreation sites for each key recreation activity identified as important to the region, including sightseeing, hiking and backpacking, wildlife viewing and photography, canoeing and kayaking and biking. It suggests that DCNR make infrastructure investments to support the model sites in order to deliver a quality recreation experience.

The investment recommendations include a gateway visitor center and accompanying nature lodge at S.B. Elliott State Park in Clearfield County; an elk watching and wildlife education center near Benezette, Elk County; a wildlife watching center and trail at Sinnemahoning State Park in Cameron and Potter counties; and improvement projects in the Pine Creek Valley, Cherry Springs State Park, Cook Forest State Park and Kinzua Bridge State Park.

The plan also recommends improving visitor services through better signage, interpretive programs, website, publications, maps, and expanded recreation programming.

DCNR has moved forward with implementing a recommendation to create a Wilds Recreation Team of planning, design and interpretive staff with experience at all levels of the agency. The team is in place, and is charged with insuring the implementation of the plan's recommendations in the field.

Both the executive summary and the entire plan, as well as supporting appendices, are available on DCNR's Web site at [www.dcnr.state.pa.us](http://www.dcnr.state.pa.us), select the PA Wilds link. Limited printed copies of the 24-page summary are available by calling 717 772-9087.

### Pine Creek Rail-Trail User Survey

#### Looking for Connection between Trail and Local Economy

The Rails-to-Trails Conservancy is launching a 7-month survey of local businesses and users of the Pine Creek Rail-Trail in Lycoming and Tioga counties. The survey will begin next month with the help of a \$10,000 grant from the Pennsylvania Department of Conservation and Natural Resources.

The survey is intended to determine trail user characteristics and attitudes, how much trail users spend and their impact on local businesses. Surveys will be available at all trail entrances and exits, and at businesses that provide goods and services for trail users.

Conservancy staff also will be conducting brief interviews of businesses that are next to the trail, which is located in the Tiadaghton State Forest.

The 62-mile multi-use trail, opened in 1996 through the bottom of the Pine Creek Gorge, runs from Ansonia to Jersey Shore. An additional eight miles of trail is being added from Ansonia to



## KTA Crew Extends Mid State North to NY

By Pete Fleszar

The mid-June Trail Crew worked wonders again! More than 20 volunteers from all over Pennsylvania, plus Maryland and Virginia, came to push the Mid State Trail from the Mason-Dixon Line through Blackwell north to PA 287 between Morris and Wellsboro. The resulting 441 kilometers of continuously blazed footpath now makes the MST longer than Vermont's fabled Long Trail. A map and guide for the section from Blackwell to 287 is being prepared; check [www.phoenix.goucher.edu/MSTA](http://www.phoenix.goucher.edu/MSTA) for updates.

Trail Crew blazed a blue path leading from the MST at Stone Quarry Run, to the top of Fork Hill far above Blackwell. A crack crew removed excess vegetation to open a viewpoint overlooking Babb Creek, looking down on Gillespie Point, and over much of northern Lycoming County. Joe Healey proclaimed the result "Best View on Mid State Trail".

The new path passes traces of Tioga County's mining past, crossing the top of an old coal incline and making use of sidehill blasted by 125 Polish immigrants in 1903. MST enters an area of creviced rock, then passes over a drainage channel on a prime example of KTA's rock work.

The last viewpoint over PA 287 and much beyond is another



Haunted Vista overlooking PA 287. Photo by Mike Cosgrove

story. The isolated Anna S coal mine shipped its product across the valley, on a bucket tram resembling a ski chairlift, to the railroad at Antrim. One of the foundations from the tramway is still visible beside newly blazed MST.

Miners left a huge bony pile reaching all the way from the mountain rim down to Wilson Creek 450 feet below. The state Department of Environmental protection is studying ways of removing its environmental degradation. So enjoy the view while you can.

Further north, MST is now complete between the Corps of Engineers' Tompkins Campground at Cowanesque Lake, marked along and across PA 49, up to the panoramic view at RV's Mt Top Campground, and descending to Elkhorn Creek.

On September 9-10, MSTA volunteers hope to complete the passage between Hammond and Cowanesque Lakes, and to help the Corps with a necessary relocation of the Stephenhouse Run footpath. Volunteers can camp for free at Ives Run on Friday and Saturday nights. Contact me at [msttioga@fleszar.org](mailto:msttioga@fleszar.org).

John Stein of Hershey was the lucky recipient of the Vasque (tm) boots awarded through Wild Asaph Outfitters of Wellsboro to a KTA Trail Crew volunteer during the Tioga work week.

## KTA Trail Care/Crew Volunteers

**Keystone State Park** (March) - Tom Bastian, Patty Brunner, Jack Bushey, Bill Dietrich, Peter Fleszar, Joe Healey, Lorraine Healey, Tom Kelliher, Ed Lawrence, Jack Leasher, Mike Lipay, Elwood Loudenslager, Shawna Marshall, Terry Marshall, Dave Maxwell, Steve Mentzer, Dennis Morris,, Mary Pitzer, Randy Sammons Kathy Sieminski, Jane Sorcan, Tom Thwaites, Tom Washko, Ken Zellars

**Link Trail** (April) - Tom Bastian, Jack Bushey, Betty Clark, Jeff Clark, Joe Clark, Mel Cooper, Bill Dietrich, Peter Fleszar, Joe Healey, Ken Hortiny, Matt Johnson, Adam Lietner, Thomas Lietner, Elwood Loudenslager, Tom Miller Ginny Owen, Jim Owen, Mike Sausser, Rich Scanlon, John Stein

**Donut Hole Trail** (May) - Tom Bastian, Joe Clark, Jeff Clarke, Butch Davey, Joe Healey, Lorraine Healey, Elwood Loudenslager, Dave McMillan, Mary Pitzer, Rich Scanlon, Wanda Shirk, Tom Thwaites

**Chuck Keiper Trail** (June) - Tom Bastian, Jack Bushey, Rick Carlson, Joe Clark, Mel Cooper, Butch Davey, Bill Dietrich, Peter Fleszar, Joe Healey, Michael Kerick, Carl Lorence, Elwood Loudenslager, Dave McMillan, Dennis Morris, Mary Pitzer, Gary Robinson, Pat Robinson, Rich Scanlon, Dave Singer

**Mid State Trail** (June) – Tom Bastian, Bob Best, Jack Bushey, Joe Clark, Jeff Clarke, Michael Cosgrove, Debra Dunkle, Peter Fleszar, Sylvia Grisez, Joe Healey, Rick Hiemenz, Tom Kelliher, Elwood Loudenslager, Jason Mize, Don Muth, Judith Muth, Bill Pearson, Jeff Richardson, Harold Schneider, Louise Sis, John Stein, Tom Thwaites, Dave Walp, Barb Wiemann, Michelle Wright, John Zinn, Pat Zinn

**Woodbourne Forest** (June) - Jeralyn Adams, Lana Adams, Lanny Adams, Dave Andre, Jon Bauer, Bill Dietrich, Chris Dunlap, Ken Ely, Martyann Gutierrez, Joe Healey, Lorraine Healey, Paul Henry, Beth Jones, Elwood Loudenslager, Jason Mize, Heath Myers-Ackerman, Molly O'Brien, Janice Reich, Kathy Sieminski, Rick Stibgen, Dave Walp

## Chuck Keiper Trail Crew

By Rich Scanlon

We had 16 persons and were able to lay out and set cribbing for three bridges on the CKT. Two of the bridges will be located on the Cross Connector trail between the northern and southern loops of the trail and the second on the southern loop of the CKT where it crosses Swamp Branch Stream. The bridges are 20, 25, and 35 feet in length. In addition, we cleared over 7 miles of trail which was impassible due to blowdowns, and cleared other trail with the self propelled DR brushcutter. The DR takes about 10% less time than a hand held brush trimmer. Also, a relocation around a deep stream crossing was completed, eliminating the crossing.

The CKT bridges will be completed during the September Trail Care (see page 2 to join us).



Supports for one of the new CKT bridges, constructed by the Trail Crew. Photo by Mike Kerick

## Maintainers Corner

### Tree of Heaven Caution

Trail maintainers are urged to use caution when hand pulling the tree of heaven weed, also known as Chinese sumac or stinking sumac. Chemicals in the tree's sap can be dangerous to humans. Some people who have pulled out this plant without wearing protective gloves have experienced symptoms similar to a heart attack.

The tree grows in dense groups and has a smooth light gray bark with compound leaves; 11-25 leaflets form along each stem. Small, yellowish-orange flowers appear in late spring. All parts of the tree emit an offensive, burnt peanut butter-like smell.

For more information, go to [www.nps.gov/plants/alien/fact/aial1.htm](http://www.nps.gov/plants/alien/fact/aial1.htm).



### Do You Need A Tetanus Booster?

Nancy Hammond, writing in the *Potomac Appalachian*, the PATC newsletter, reminds all maintainers that a tetanus booster shot is a simple preventive health measure that should be on every maintainer's "to do" list.

Tetanus, commonly called lockjaw, is a disease caused by infection from a bacterium found in dirt and human and animal waste. Scratches, scrapes, splinters, cuts, puncture wounds, insect bites, animal bites, or any open wound provides a pathway to infection. A deep puncture wound caused by a nail, knife, or trail tool protects the bacterium from oxygen. Eleven percent of all reported cases are fatal.

Childhood immunizations do not provide lifetime protection. Adults should get a booster shot every ten years. If infected, the victim has only up to 48 hours to get a shot.

### ATC Register Available to Trail Maintainers

Long time trail maintainers might remember *The Register*, published from 1978-2004 by the Appalachian Trail Conference for trail maintainers. Now the Appalachian Trail Conservancy has revived *The Register* as an online publication on the ATC web site (choose Volunteers, then Register). *The Register* will be issued quarterly and will address traditional maintainer concerns (blow downs, privies, etc.) and stewardship issues such as environmental monitoring and invasive species. Individuals can e-mail [TheRegister@appalachiantrail.org](mailto:TheRegister@appalachiantrail.org) to get on the mailing list for new issues.

### Trail Conditions Web site

A prototype web site for reporting trail conditions in the Mid Atlantic region is up and running at [www.midatlantichikes.com/trailreport.htm](http://www.midatlantichikes.com/trailreport.htm). The site was developed by Mike Juskelis of the Sierra Club and the West Virginia Highlands Conservancy. Hikers may file online reports about trail conditions that require attention. The site directs hikers wishing to report problems in Pennsylvania to the KTA trail reporting form on the KTA web site.

## Hiker Alerts

### Mason-Dixon Trail

In the Central Section, PPL has relocated and improved the trail at Lock 13. The M-DT now follows the PPL trail. In the Western Section, the Thursday retiree group has completed two relocations along Otter Creek (Map 4, east to west mile 0.3 and mile 1.8).

Vehicles parked on the north side of Muddy Creek at Gaging Station bridge (Lower Chanceford Township) are being towed. Vehicles on the south side of the bridge, which is in Lower Peach Bottom Township, are not being towed.

### Lower Trail

A bicyclist resting on a bench along the Lower Trail was bitten by a rabid bobcat. After the bite, the cycling used his bike to fend off the animal and then rode four miles to report the incident. A police officer killed the animal.

### Mid State Trail

The logger who bought the timber felled by Hurricane Ivan at Beaver Pond finally started removing his logs in late May. Unfortunately he has started at the far end of the timber sale farthest from the Mid State Trail, which has been closed for nearly two years. Also, since he doesn't work at Beaver Pond every day, the gate on the access road is closed many days.

---

## ANF Public Hearings on Forest Plan

The Allegheny National Forest (ANF) will be hosting two public hearings to allow people to voice their opinions about the Forest Plan Revision. The first hearing will be August 21 at the Spotts Auditorium, Slippery Rock University. The second hearing will be August 22 at the Kane Area Community Center.

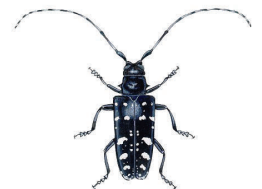
The hearings will be held from 5 until 9 PM with a half hour break at 6:30 PM. Participants should sign up at the door when they arrive. Each person will have five minutes to express their opinion on the Proposed Land and Resource Management Plan and the Draft Environmental Impact Statement of the ANF. This is a great opportunity to get to talk directly to Forest Supervisor Kathleen Morse and Planning Officer Bill Connelly. The hearings will be run by a moderator and all comments made will be recorded for official use.

The 90-day public comment period began on May 26 and will end on Aug. 28. Comments can also be made in writing to Allegheny National Forest Forest Plan Revision, PO Box 36, Warren, Pa 16365.

## Don't Move Firewood" Campaign Seeks to Save State's Forests

Pennsylvania is initiating a "Don't Move Firewood" campaign in an effort to stop the spread of non-native insects. Campers should not pack firewood for a camping trip. Dangerous insects can be transported to new locations in this wood and emerge to infest forests at the new location.

High on the list of hitchhiking insects are the emerald ash borer, the siren woodwasp, the Asian longhorned beetle, and the hemlock woolly adelgid. Photos of these invasive insects are available at [www.fs.fed.us/r9/forests/allegheny](http://www.fs.fed.us/r9/forests/allegheny).



---

## Around the Clubs

### Appalachian Mountain Club, Delaware Valley Chapter

DVAMC's Chapter Youth Program is working with Education-Works, an Americorp agency that provides after-school programs for children from Philadelphia inner-city schools, to offer middle school children the opportunity to experience outdoor life through half-day hikes in parks in the greater Philadelphia area.

### Lancaster Hiking Club

**Ruth Bauer**, who served as a LHC Board Member for four terms during the years 1948-1963 and produced "Footnotes," the club journal, died recently.

### Philadelphia Trail Club

PTC is celebrating its 75<sup>th</sup> anniversary this year. An analysis of the club membership by county of residence shows that only 23 of 299 members reside in Philadelphia. The largest number of members live in Montgomery County (more than 40%), followed by Bucks, Delaware and Chester Counties.

### Potomac Appalachian Trail Club

**Mal Fordham** and **Lauren Lang** won American Hiking Society volunteer of the year awards. Fordham is Volunteer of the Year for the Northeast region, and Lang is Volunteer of the Year for the Mid-Atlantic states. In addition, Fordham was named National Volunteer of the Year.



PATC and **President Tom Johnson** were sued by a club member for defamation. When the case was brought to court, the judge rendered a summary judgment in favor of PATC and the case was dismissed.

PATC has been forced to reduce its trails budget due to a large increase in the cost of

liability insurance.

PATC maintains over 970 miles of trail with the help of more than 400 trail overseers, 17 district trails managers, and a supervisor of trails. A full time staff person coordinates the volunteer effort. Fifteen overseers have maintained trails for PATC for more than 20 years; topping the list are **Charles and Lillian Giesecking**, who each have been on the job for 46 years.

### Venture Outdoors

VO is celebrating its fifth anniversary. Founded in June 2001 as the Western Pennsylvania Field Institute, the group changed its name in 2004 to better reflect its mission and activities. This year VO will offer more than 400 public programs.

On a Garlic Mustard Hike, participants learned about weeds and invasive plants, such as the Garlic Mustard, a fast spreading invasive that even deer won't eat because it's too spicy. Afterwards, hikers sampled homemade dishes featuring wild edibles, including the garlic mustard, which spices up stir-fry.

### Wilmington Trail Club

In 2005, WTC offered 349 hiking events, totaling 3,078 miles (averaging 8.8 miles per event). **Mike Kintner** hiked 1,712 of those miles and also led 25 events.

WTC has increased dues from \$20 to \$30 for 2007 and adopted a 2-tier dues system in which members who receive their newsletter by email enjoy a \$5 dues discount. The club expects that for

the next 4-5 years the club will run a surplus, and then take 4-5 years to erode the accumulated surplus, thus forestalling another dues increase for 8-10 years. The last dues increase was in 1997.

### York Hiking Club

YHC is awarding a t-shirt to any member who participates in at least three scheduled work hikes in a year.

---

## New Club Forming in Western PA Allegheny Trails Hiking Club Seeks Members

The newly formed **Allegheny Trails Hiking Club**, based in southwestern Pennsylvania, invites all interested hikers to join them. Monthly meetings are currently being held the last Thursday of each month at Panera Bread in the Miracle Mile shopping center on US 22 in Monroeville from 6:30-7:30 PM.

The club will focus on offering free group hikes, maintaining area trails, educating newcomers, and offering backpacks and day hikes.

Organizer **Mike Lipay** of Plum points out that there are more than 500 miles of trails within an hour's drive of Monroeville, but many people don't know about them. In addition to learning about new hiking areas, advantages of a club are companionship, safety, and shuttle transportation for linear hikes.



For more information, check out the club website [www.AlleghenyTrails.org](http://www.AlleghenyTrails.org), email [info@AlleghenyTrails.org](mailto:info@AlleghenyTrails.org), or call Mike at 412-795-7673.

---

## Walkin' Jim Stoltz "Forever Wild – 2006" Concert

Walkin' Jim Stoltz's 20<sup>th</sup> anniversary multi-media concert tour will make a stop in south central Pennsylvania. Eight environmentally focused groups have joined forces to co-sponsor a concert at the Mechanicsburg Middle School on Saturday September 23 at 7:30 PM. This is a free concert; seating is limited to the first 1,224 attendees.

Walkin' Jim is a folk singer who plays guitar and harmonica and sings. His music reflects his concern and love for the wild places and wild creatures he has seen on his long journeys in the back-country.

The Appalachian Audubon Society is the organizing sponsor, as well as providing financial support. Other sponsors are the Appalachian Trail Conservancy, the Bluebird Society of PA, the Gov. Pinchot Group of the Sierra Club, the Manada Conservancy, the Nature Conservancy in PA, the PA Parks & Forests Foundation, and Physicians for Social Responsibility. About 25 groups will have educational and informational displays in the lobby the evening of the concert.

The school is located at 1750 S. Market St (Rte 114) in Mechanicsburg, ¼ mile north of Rt. 15. Call 717-732-5615 or email [mitandpak@aol.com](mailto:mitandpak@aol.com) for more information. Check out [www.foreverwild.info](http://www.foreverwild.info) for regularly updated information about Walkin' Jim and his national "Forever Wild -2006" tour.

---

## Educational Opportunities

### Middle Creek Wildlife Management Area

Each year the Game Commission's Middle Creek Wildlife Management Area holds free wildlife-related educational programs for the public in the visitor center. All programs begin at 7:30 PM. The Game Commission's Middle Creek Wildlife Management Area is about two miles south of Kleinfeltersville, Lebanon County, along Hopeland Road, just south of the Lebanon-Lancaster county line.

Aug. 17: American shad - life history of the American shad, past problems and current restoration efforts, issues affecting shad and shad migration on both the Delaware and Susquehanna rivers

Sept. 7: Bald eagle, peregrine falcon, and osprey - decline and recovery of Pennsylvania's three most charismatic birds of prey

Sept. 16-17: 20th Annual Middle Creek Wildfowl Show featuring hand-carved waterfowl decoys, other wildfowl art, retriever demonstrations, duck and goose calling contests and much more. The show will run from 9 AM to 5 PM both days. General proceeds from the show will benefit the Wildlands Preservation Fund for the preservation of open space.

### Beltzville SP Demo Day

Get Outdoors at the Beltzville State Park Demo Day on August 19 from 10 AM-5:30 PM. Informative sessions include Introduction to Hiking and Backpacking, Leave No Trace, Kayaking, and Pennsylvania folk music. Programs are free, but registration is required. Contact Carissa Reilly-Longo at 610- 377-9150 or [Beltzvillestatepa.us](mailto:Beltzvillestatepa.us)

### Mohican Outdoor Center Workshops

Fees include food, lodging, and instruction: Call 908-362-5670. Yoga and Hiking -- Sep. 15-17 or Oct. 6-8, \$185  
Backpacking for Beginners -- Sep. 21-24, \$150  
Wilderness First Aid -- Sep. 29-Oct. 1, \$195

### Wilderness Safety Council

Eighteen hour courses in Wilderness First Aid will be held near Philadelphia on Oct. 14-15 and in Harrisburg on Nov. 4-5. Cost is \$160. For more information, call 703-836-8905 or visit [www.wfa.net](http://www.wfa.net).

### Walkers Weekend

The Pocono Environmental Education Center in Dingmans Ferry is hosting a weekend Fall Foliage Walkers Paradise on Oct. 20-22. Led by a PEEC staff member, participants will explore trails on the Pocono plateau and witness the beauty of autumn. Lodging in cabins with private bath and meals are available, or single day registration is available. Pre-registration is required. Call 570-828-2319 or email Erich Schramm [eshramm@peec.org](mailto:eshramm@peec.org) or Ethan Hunter, [ehunter@peec.org](mailto:ehunter@peec.org)



**New AT bridge over Dunfield Creek in Delaware Water Gap. Photo from Ernie Kabert, Superintendent of Worthington State Forest.**

## Hiker Gear and Gadgets

### Light Up Your Pack

Oryon Technologies of Addison, TX, has announced the development of Elastolite, a light-emitting, flexible, washable, lightweight, waterproof panel that can be stitched into outerwear, backpacks, and other fabric items. The company is negotiating with gear manufacturers. Check out [www.oryontech.com](http://www.oryontech.com).

### Recharge Your Cell Phone

To recharge your cell phone in the back country, try the 2.5 ounce Sidewinder hand crank cell phone charger. Two minutes of cranking will provide up to six minutes of talk time. For more information, go to [www.istdesigns.com](http://www.istdesigns.com).



## Hiker Health

### Bug repellents

DEET is the most widely used bug repellent in the world today. According to several recent studies, it is also the most effective. It can be applied sparingly, since a tiny amount is effective. Five to ten percent concentrations provide one to two hours of complete bite protection. Twenty percent concentrations work for four to five hours. However, DEET is caustic, melting rayon, spandex and most plastics (but not nylon, wool, or cotton).

A synthetic chemical alternative approved last year is picaridin. Concentrations of seven percent provide roughly two hours of protection. A 20 percent concentration is effective for nearly eight hours, but is not yet available.

Natural options are oil of eucalyptus, which can provide up to two hours of protection, soybean oil, effective for about 90 minutes, and citronella oil, good for 10-20 minutes.

Folk remedies, such as fabric softener sheets, vinegar, Vicks VapoRub, catnip, vitamin B-1, garlic, chamomile tea, bananas, basil leaves, Avon Skin-So-Soft and alcohol, tar and petroleum jelly, or Epsom salt, stale beer and Listerine have no proven value as a bug repellent.

### Tick Remover Tool

Svensson Enterprises, the US distributor of The Tick Remover, a Swedish device for "the proper removal of ticks" claims that ordinary tweezers are not suitable for removing ticks, since they increase the risk that the body of the tick will be pulled off. Or, if too much pressure is applied to the tick's body where the bacteria are stored, the bacteria may accidentally be injected through the bite into the victim.

Svensson asserts that The Tick Remover minimizes these risks through its patented spring loaded, pinching action, which applies a predetermined amount of pressure on the tick's body. Its angled pincers permit precise placement on the tick, while the cylindrical design allows the user to gently dislodge the whole tick.

The Tick Remover could also be useful in removing thorns and splinters. The Tick Remover sells for \$9.95. Contact Svensson Enterprises, Inc., 81008 Alexander, Chapel Hill, NC 27517, 866-908-8600, or [www.thetickremover.com](http://www.thetickremover.com)



## Lyme Disease Threat In PA

Pennsylvania has the unenviable distinction of being a leading state in the number of reported cases of Lyme disease. In 2004, the Commonwealth had 3,985 cases, representing about 20 percent of all reported cases in the entire country. While that number is a decrease from 2003, when Pennsylvania led the nation in infections, Lyme Disease remains a serious threat for anyone who spends time outdoors.

The common ways of identifying Lyme disease are either a “bull’s-eye rash” or a blood test. However, many victims do not develop a rash, and Lyme disease is often misidentified. Symptoms resemble many other diseases, including multiple sclerosis, Lou Gehrig’s disease, and fibromyalgia.

Lyme disease is spread by blacklegged ticks, also known as deer ticks. When engorged with blood, they can increase ten fold in size. Ticks emerge from the soil (where they spend the winter) as the weather warms and remain active until winter. They locate their victims by sensing carbon dioxide, odors, and heat and can crawl up to 15 feet to attach themselves to a host. Ticks cannot jump or fly. Once on their victim, ticks crawl until stopped by tight clothing, such as belts, straps, and underwear.

Ticks prefer parks, lawns, and playgrounds where they can find a steady stream of hosts – not wooded areas.

Lyme disease symptoms appear in three stages. At first, victims may exhibit a “bull’s-eye” rash at the bite site and flu-like symptoms that disappear in a few weeks. Weeks or months later, the patient develops any of a wide variety of symptoms such as headaches, numbness, lethargy, and abnormal heart beat; these also vanish after a few weeks or months. Third stage symptoms, which might take years to develop, could include arthritis, fatigue, and loss of memory.

For further information, consult the PA Dept. of Health web site

KEYSTONE TRAILS ASSOCIATION  
PO Box 129  
Confluence, PA 15424-0129  
ADDRESS SERVICE REQUESTED

Non-Profit Org  
U.S. Postage  
PAID  
Confluence, PA  
Permit #9

at [www.dsf.health.state.pa.us](http://www.dsf.health.state.pa.us) under Health Topics A-Z.

To help protect yourself:

- Wear light-colored long pants tucked into your boots and long sleeve shirts with tight cuffs
- Use DEET, which can be up to 90 percent effective in preventing ticks from attaching
- Don’t sit on the ground
- Walk in the center of trails to avoid contacting brush
- Carefully inspect yourself for ticks
- Shower and wash your clothes after outdoor activities
- Remove any attached ticks by exerting a steady pull with tweezers applied as close as possible to the mouth (*see page 15*)

## KTA Membership Form

Name: \_\_\_\_\_

Address: \_\_\_\_\_

\_\_\_\_\_

\_\_\_\_\_

Telephone: \_\_\_\_\_

E-mail: \_\_\_\_\_

Club Affiliation (if any): \_\_\_\_\_

Basic Individual Membership One Year—\$15	\$
Youth Membership (Under Age 18) One Year—\$5	\$
Brush Cutter Membership One Year—\$20	\$
Blaze Painter Membership One Year—\$30	\$
Trail Builder Membership One Year—\$50	\$
Life Membership One-Time Payment—\$375	\$
Additional contribution*	\$
<b>Total Enclosed</b>	\$

**PLEASE NOTE:** Organizational members are welcome and should forward the name and contact information for the group’s designated KTA representative along with appropriate dues of \$25 per year for clubs and commercial enterprises and \$10 per year or \$25 for three years for youth groups. All dues payments and correspondence should be mailed to: P.O. Box 129, Confluence, PA 15424.

\*KTA is certified by the Internal Revenue Service as a 501(c)(3) organization. As such contributions are deductible to the extent per-